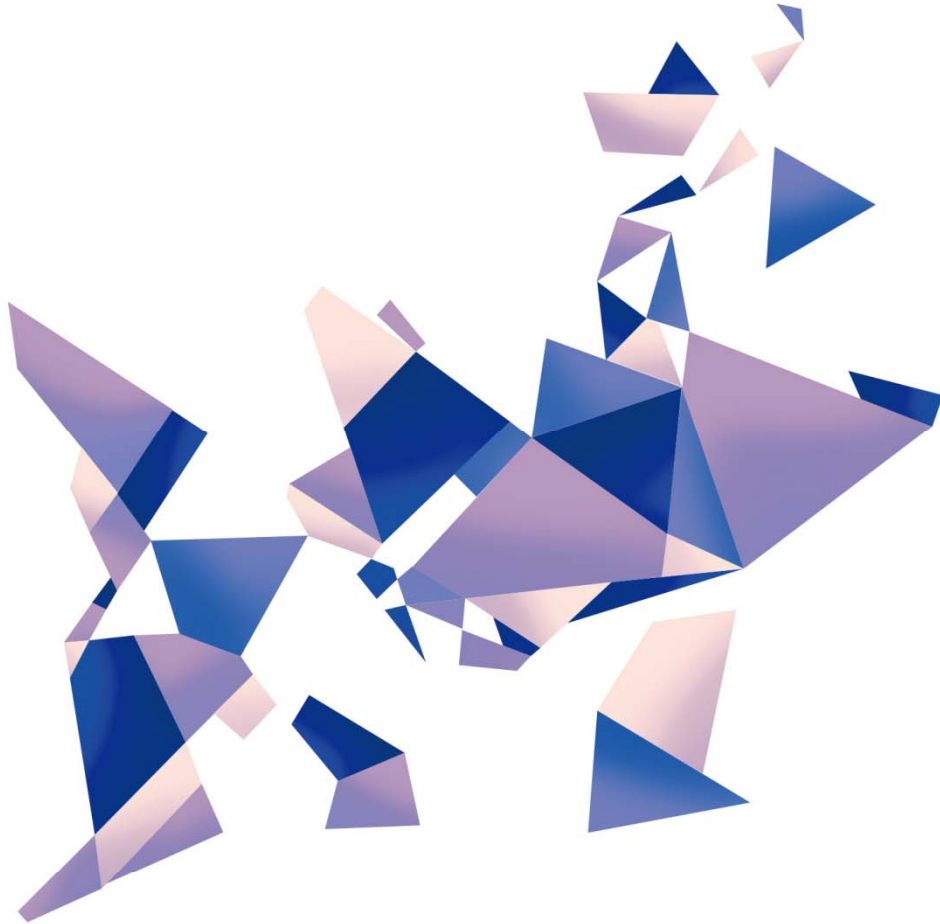


KP2

Pandora series

Version: v1.0

Release Date: October 2021



Specifications



TEL 400 159 0808
Web: www.kystar.com.cn

Beijing KYSTAR Technology Co., Ltd.

Professional Ultra HD Video Display
Control system integrated solution and service provider

Version record

version number	Change details	release time
V1.0	first release	2021.10.25

Pandora Box KP2 Product Specifications

Overview

KYSTAR Pandora KP2 is a multimedia player that integrates a sending card and a playback terminal. Compared with the traditional synchronous playback solution, it can reduce the need for a computer playback terminal and is easy to control at any time. It is small in size, powerful in performance, powerful in functions, and more. Large load capacity;

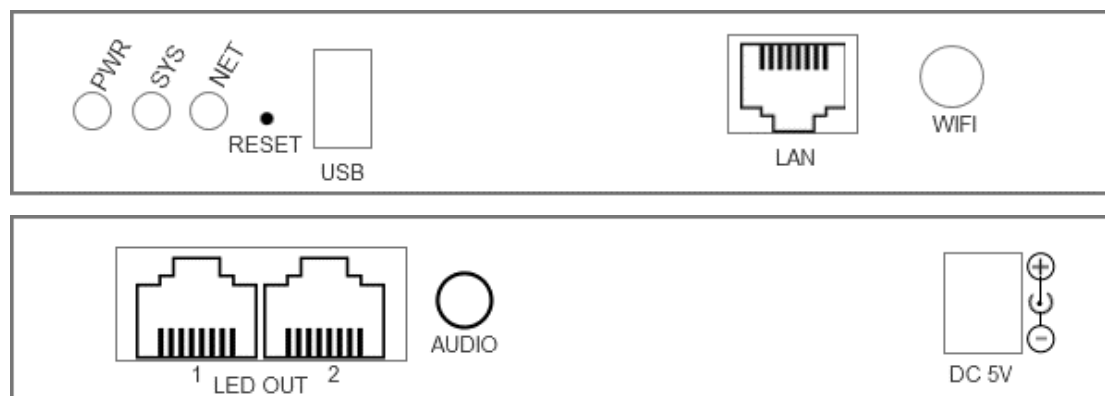
Advertisements on mirror screens, light pole screens, full-color door screens, etc.



Features

- Gigabit Ethernet port*2, single network port 650000 pixels, the whole machine carries 1.3 million pixels, the widest is 3840, the highest is 2000;
- WIFI, Ethernet port, U disk multiple communication methods
- Built-in 8GB (5G available for users), support U disk expansion
- 3.5mm audio output, audio and video synchronous output
- Support multiple windows and multiple materials to play on the screen at the same time
- Supports wireless configuration of the screen through mobile phones and computers without USB cable
- Kystar PE program editing, drag and drop operation, do what you want
- Concise APP for full control of screen adjustment, editing and management,

Panel description



Name	Function Description
SYS	Running status indicator The system and app start normally, sys is always on; When the player app is abnormal, sys flashes, once per second System upgrade process, sys flashes quickly, 4 times per second
NET	Connect status indicator The NET light is always on when Pandora is connected, otherwise it will not be on; When connect to cloud platform, NET flashes, once per second; Upload program, NET flashes quickly, 4 times per second
PWR	Power indicator, long light indicates normal power supply
RESET	Restore factory settings, always press for 5 seconds to factory
WIFI	WifiWifi Antenna interface
LEDOUT	Gigabit output network port, connect to all Kystar receiving cards
AUDIO	3.5mm Audio output port
USB	USB2.0 , Update program via U disk
LAN	100M input network port, access to LAN, can be directly connected to PC
5V DC	Provide 5V/2A power supply

Specifications

External interface type		
Gigabit output network port*1	output	Output signal to receiving card
Audio port*1	output	1/8" (3.5mm)TRS
USB2.0*1		Storage expansion (U disk or SD card, maximum 128G)
100M network port*1	input	Access to local area network, cluster control
WIFI antenna*1		WiFi STA+AP Dual mode, can be connected to the router, can be used as a hotspot for mobile phone, computer connection

DC Power input	DC Power input
----------------	----------------

Performance parameter	
Hardware performance	1.6GH, quad-core CPU, 3D GPU 1GB@600MHz DDR3 high-speed memory Support 1080p@60fps hard decoding playback Support 1080p@30fps hardware encoding
Storage	Built-in 8GB storage (5G available to users)
Load	One lan port load 650,000 pixel,whole machine load 1.3million pixels, the widest is 3840, the highest is 2000
Wifi Connection distance	20m (Unobstructed)

Support multimedia format	
Video format	AVI, WMV, MPG, RM/RMVB, VOB, MP4, FLV and other common video formats; Supports same time playback of multiple videos
Audio format	MPEG-1 Layer III , AAC etc.
Image Format	Support bmp、jpg、png etc.
Text form	Single line text, static text, multi-line scrolling text, office, etc.
Clock	Real-time clock, multi-regional clock display and management
OSD	Support 32bit true color OSD, can be displayed in any position, support video/graphics mixing, can superimpose graphics on the video.

Whole machine specification	
Dimensions	153×104×27mm (L×W×H)
Support receiving card	Kystar all receiving card
Number of loaded receiving cards (single network port)	200 (Single network port)
Input adapter power	AC 100~240V 50Hz
Working current	2A
Working Voltage	3.8V – 5.5V
Weight	378g
Operating temperature	-20°C -70°C
Working humidity(%)	5%-95%

Attachment: equipment size chart

